

# STARTRUCK

## STARTRUCK TECHNICAL FEATURES

Supporting structure in tubulars and hot-dip galvanized steel, consisting of four columns in the lower part at the bottom of the roll-over, and connected into the upper part by beams, on which is fixed the group that bears the vertical brushes trolleys.

Cabinet for the electrical board, and cabinet for hydro-pneumatic groups and chemical products, realized in glass fiber with modern and functional design.

Water-proof gearboxes, in special anti-corrosion alloy.

Wide programming possibilities in order to wash automatically: trucks, buses, vans, cars, with possibility of specific management of various type of mirrors, spoilers, platforms with side banks, trailers, hooks, rear hydraulic platforms, etc..

Front and rear double brushes overlapping.

Supplying till four different chemical products.

Color display screen 7" for the total management of the programs and settings, with shatterproof buttons for a simple and quick programs selection.

### Structure

- Hot-dip galvanized steel frame
- Roll-over direct drive, through inverter
- Stainless steel fasteners

### Vertical Brushes

- Four-beam guide in hot-dip galvanized steel
- Power electronic control
- Electrical moving through toothed belt
- Front and rear double brushes overlapping
- Safety devices for excess brushes pressure

### Horizontal brush

- Electric lifting through inverter
- Power electronic control
- Guides in hot-dip galvanized steel
- Double lifting belt with safety sensors

### Medium pressure and high flow pre-wash

- Lower side medium pressure (optional)
- Side medium pressure (optional)
- Side medium pressure with rotating heads (optional)

### Standard features

- Hydraulic circuit with electro-valves and dedicated ramps
- Shampoo dosing pump
- Control terminal in wall box with numeric key-pad and color display

AQUARAMA Srl  
Località Piano, 38 - 12060 Novello (CN) - ITALIA  
Tel. +39 0173 776822 - Fax +39 0173 792501 - info@aquarama.it



## Cutting-edge technology for a lasting success and reliability.

### DATA SHEET

#### Machine dimensions (mm)

Washing height	4.200	4.600
Machine height	5.200 (4870*)	5.600 (5270*)
Machine width	5.000	
Washing width	3.500	
Machine depth	2.900	
Machine weight (kg)	2.250	
Distance between the rails	3.800 [3.700 o 3.900 o 4.000 upon demand]	
Rails length	18.000 [26.000 optional]	

\* With horizontal brush at rest

### Technical data

Translation speed	m/min	0-20
Water pressure	Bar	3-5
Air pressure	Bar	8
Voltage	Hz	400 3/N/PE 50 230 3/N/PE 60 optional
Total power	kW	6,5
Control voltage	V	24

### High flow medium pressure (optional)

Water high pressure	Bar	20
---------------------	-----	----

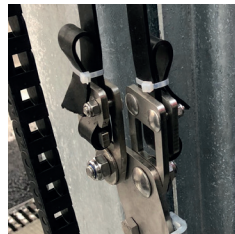
Data are just average and indicative

# The power of technology STARTRUCK



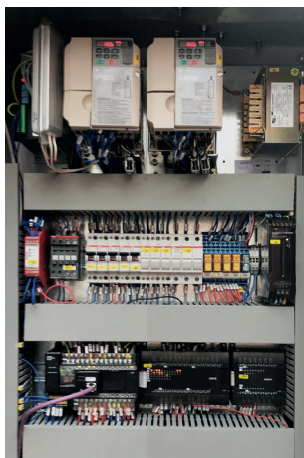


# STARTRUCK



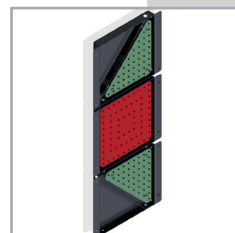
## HORIZONTAL BRUSH LIFTING BELTS

The lifting belts are double, in order to double the lifting capacity and avoid the brush fall even in case of break of one of the belts. A specific sensor detects both the loosening and the breaking of the belt.



## ELECTRICAL BOARD

Electrical board mounted into water-proof glass fiber cabinet, on board with innovative and functional design. Inverter for roll-over translation and horizontal brush lifting. PLC for total management of the machine, power brushes control board, power supplies, safety relè, etc.. will complete the equipment on board.



## TRAFFIC LIGHT

High brightness LED traffic light, Forward, Stop and Backward signal managed by photocells. Each card is totally water-proof through immersion into a special insulating resin.



Image for illustrative purposes only.  
The gantry model shown is equipped with optional.

## VERTICAL BRUSHES TROLLEY

A hardy sliding trolley on 4 sturdy tubular beams through wheels in techno-polymer with polyurethane coating. Translation with toothed polyurethane high strength belt. Brush rotation shaft in high strength steel, on bearings support specially designed to bear all the weights and stresses, leaving to gearboxes (fixed with rubber supports) the sole burden of the rotation, without starting kickbacks. Control of the excessive inclination of the brush through rubber buffers and sensors, in both directions, for a quick intervention during the washing of particular shapes or anomalies of the control systems.



## HYDRO-PNEUMATIC GROUPS AND CHEMICAL PRODUCTS CABINET

Water-proof glass fiber cabinet with innovative and functional design. Modular and compact chemical product tanks, with 20 lit. capacity. High capacity pneumatic dosing pumps (12 lit/h), usable in tandem mode to reach 24 lit/h. EPDM and/or VITON seals. Solid brass electro-valves, with chemical products injection through special plastic blocks, downstream of the valves themselves.



## ROLL-OVER TRANSLATION GEARBOXES

Towing wheels on water-proof supporting bearings, for the supporting of the machine weight. Gearboxes mounted on rubber parabolic buffers for a smooth movement without any structure kickback at the start and/or at breaking. Very comfortable maintenance/substitution.



## HORIZONTAL AND VERTICAL BRUSHES

In Polyethylene diameter 1100 mm with differentiated density in the various areas in order to ensure a strong washing where necessary, but also minimum impact on fragile elements (mirrors, spoilers, etc.). Available Carlite polishing brushes (optional for bus washes).



## HIGH FLOW AND MEDIUM PRESSURE ROTATING HEAD

The combination between head rotation and roll-over translation, together with the high flow (from 60 to 100 lit/min each rotating head, at 20 bar and with straight jet nozzles), ensures a strong and deep washing of the most critical parts of the vehicle, maybe also those ones not properly reachable by the brushes.



## DRIVE THROUGH UNDER-CHASSIS WASH

A series of nozzles with vertical jet properly positioned under the floor, allow a deep cleaning of the vehicle's chassis. Also in this case medium pressure with high flow is used.

